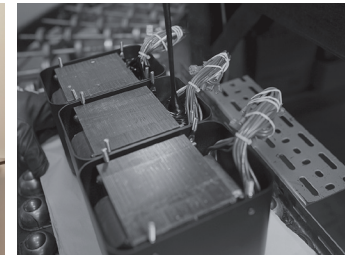


# MA9000 integrated amplifier

- The MA9000 Integrated Amplifier can help you achieve audio perfection. Offering 300 Watts per channel, it is our largest integrated.
- Features our new McIntosh Monogrammed Heatsinks™ that are so efficient at dissipating heat that they warrant bearing the McIntosh “Mc” logo.
- All digital inputs are housed in our new DA1 Digital Audio Module which can be easily replaced by future modules to keep your MA9000 up to date as new digital audio formats and technologies are developed.
- Supports high resolution digital music up to DSD256 and DXD 384kHz via a Quad Balanced 8-channel, 32-bit/192kHz DAC.
- All unbalanced analog connectors are made from premium gold-plated solid brass for superior signal handling and grounding.
- The MA9000 is full of McIntosh technological staples including Autoformers, Power Guard®, Sentry Monitor™, Home Theater PassThru, High Drive headphone amplifier with Headphone Crossfeed Director (HXD®), Power Control and Solid Cinch™ speaker binding posts.



Helps Achieve Audio Perfection

McIntosh®

LEGENDARY PERFORMANCE™

[www.mcintoshlabs.com](http://www.mcintoshlabs.com)

# MA9000 integrated amplifier

## Power Output:

300 Watts per channel.  
McIntosh Autoformers ensure all speakers receive the full 300 Watts regardless if they are 2, 4 or 8 Ohm impedance.

## Total Harmonic Distortion:

0.005% maximum from 20Hz to 20kHz

## Tone Controls:

8-Band analog tone controls

## Headphone Amplifier:

1/4" High Drive with Headphone Crossfeed Director (HXD®). Powers all headphones from 20 to 600 Ohms.

## Analog Inputs:

6 Unbalanced  
2 Balanced  
1 Moving Coil (adjustable)  
1 Moving Magnet (adjustable)

## Digital Inputs:

2 Coax  
2 Optical  
1 USB  
1 MCT (used with McIntosh MCT series SACD/CD Transports)  
All are housed in DA1 Digital Audio Module.

## Home Theater PassThru:

Allows for seamless interfacing with a Home Theater system.



## Overall Dimensions (W x H x D):

17-1/2" (44.5cm) x 9-7/16" (24cm) x 22" (55.88cm) including knobs, connectors and cables

## Weight:

101 lbs (45.8kg) net,  
134 lbs (60.8kg) in shipping carton

## For the Consumer's Protection:

In order to ensure the highest level of customer satisfaction, new McIntosh products may only be purchased from an Authorized McIntosh Dealer; and, with certain limited exceptions may only be purchased over-the-counter or delivered and installed by the Authorized McIntosh Dealer. McIntosh does not warrant, in any way, products that are purchased from anyone who is not an Authorized McIntosh Dealer, or that have had their serial numbers altered or defaced.

## Companion Products

The MCD550 SACD/CD Player, MCT450 SACD/CD Transport, MT10 Precision Turntable, MR87 AM/FM Tuner, MB50 Streaming Audio Player, MEN220 Room Correction System, MPC1500 Power Controller and XR100 Loudspeakers are logical companions for the MA9000 Integrated Amplifier. Your Authorized Dealer can provide additional information on other McIntosh product combinations.

To learn more, please call us at 1.800.538.6576.

# McIntosh®

LEGENDARY PERFORMANCE™

www.mcintoshlabs.com